

Quality and Innovation

# Fittings for All-Glass Assemblies

## Portavant Sliding Door System

# Portavant - Quality and Innovation



## Comfort Stop

The damping system for your safety:

Slows the glass door effectively, gently and quietly, regardless of its weight and closing speed -- and does so over a distance of several centimetres.



## Exact Trigger

The mechanism for reliable functioning:

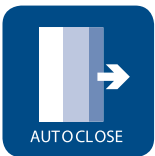
A revolutionary design principle with patent pending ensures that the damping system is always triggered reliably.



## System Fit

The modular solution for your installation situations:

Virtually every imaginable installation is possible with the modular, combinable system components.



## Auto Close

The self-closing system for your well-being:

Fully closes the glass door effectively, gently and quietly after it has been slowed down by the innovative damping system.



## Easy Install

The solution for convenient installation without glass cutouts:

Makes installation of all-glass sliding doors exceptionally easy.



## Design Select

Perfection combined with diversity for your designer touch:

Provides stylistic accents with elegant, sophisticated covers with curved or straight-line designs and offers suitable innovative handles in the finish that you prefer.



# Profit from all the advantages

## The traditional reliability of delivery

The complete product range is kept in stock in Haan (Germany) and delivered with the high level of reliability that you have come to expect from Bohle.

## Professional advice

You get expert advice and technical support from our qualified technical staff in the office and in the field. With Portavant, too, you benefit from the traditionally high service quality that Bohle offers.

## Trusted Bohle quality

For more than 85 years Bohle has stood for highest quality, top-grade workmanship and a long service life of their products. The well-known Bohle quality can also be found in the products of the Portavant range:

- Extremely low initial roll resistance (class 3 per DIN EN 1527), resulting in exceptionally smooth running properties
- Exceptionally long service life (class 6 =100,000 cycles per DIN EN 1527)
- Corrosion resistance (suitable for indoor damp environments per DIN EN 1527/1670)
- Maintenance-free components

## Easy to install

Impressive features of the Portavant are its easy installation and handling simplicity in all types of installation:

- The pane can be hung from the front onto the mounted top track without difficulty
- The height of each roller assembly can be adjusted +/- 4 mm to level the glass door
- The closed position of the door can be adjusted even after the cover profile has been installed
- Anti-theft and anti-tilt devices can be screw-attached retroactively

## No processing of the glass required

The sophisticated clamping technology makes processing of the glass unnecessary. The suspension was developed to ensure that the panes are securely held by the clamp mechanism. But if there is a special need, the clamp mechanism can be combined with a drilled hole in the glass and a securing pin.

## Adjustable floor guide

The elegant floor guide features easy adjustment to accommodate different glass thicknesses. The push-in plastic inserts allow 8 to 12,76 mm glass panes to be securely guided. There is no play in the guide, thus preventing the panes from rattling. The resistance of the floor guide is attuned to the reliable self-closing system.

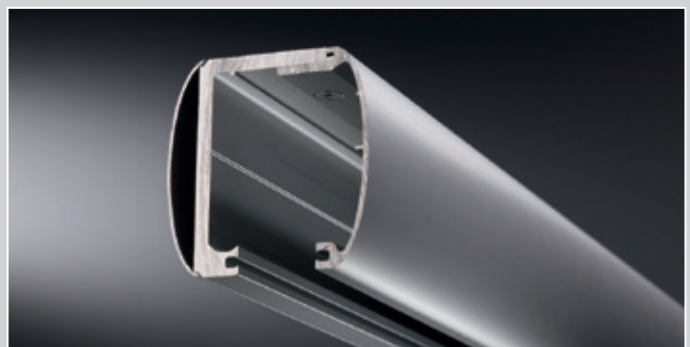
## Modular system

The modular concept of the system meets the needs of the customer by allowing logistics and warehousing to be maintained. The system components can be combined to suit specific installation situations and individual requirements. Portavant is suitable for toughened as well as laminated safety glass.

Technical data	
Door weight	80 kg
Glass thickness of sliding doors	
Toughened glass	8 / 10 / 12 mm
Laminated glass	8.76 / 10.76 / 12.76 mm
Glass thickness of fixed glazings	
Toughened glass	8 / 10 / 12 mm
Laminated glass	8.76 / 10.76 / 12.76 mm
Roller assemblies	High quality precision rollers with plastic cover
Versions	one and two-door

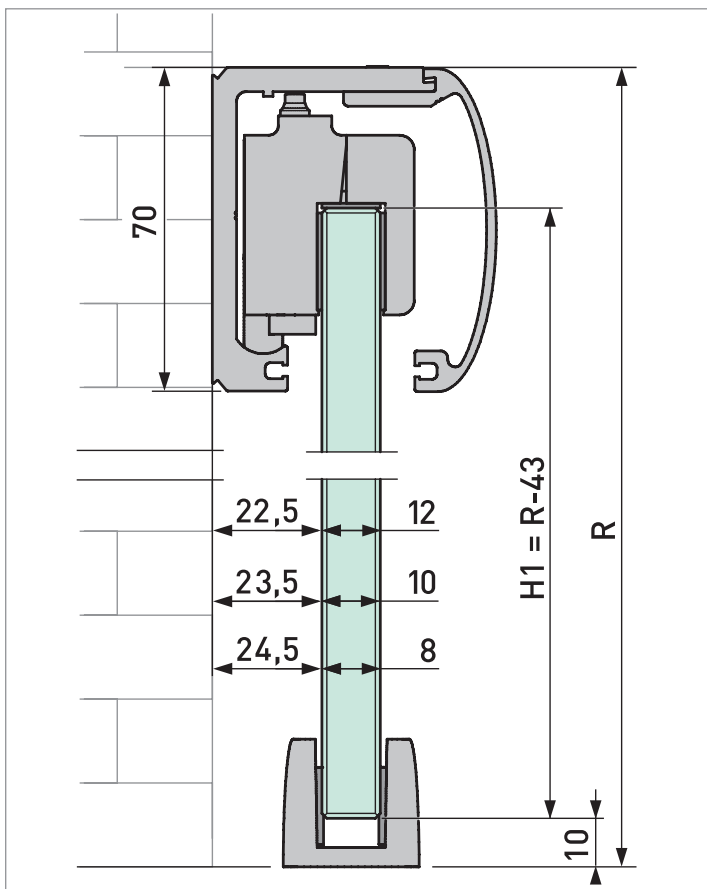


Roller assembly with damping system and self-closing system



Profile with optional designer cover on the back side for ceiling mounting

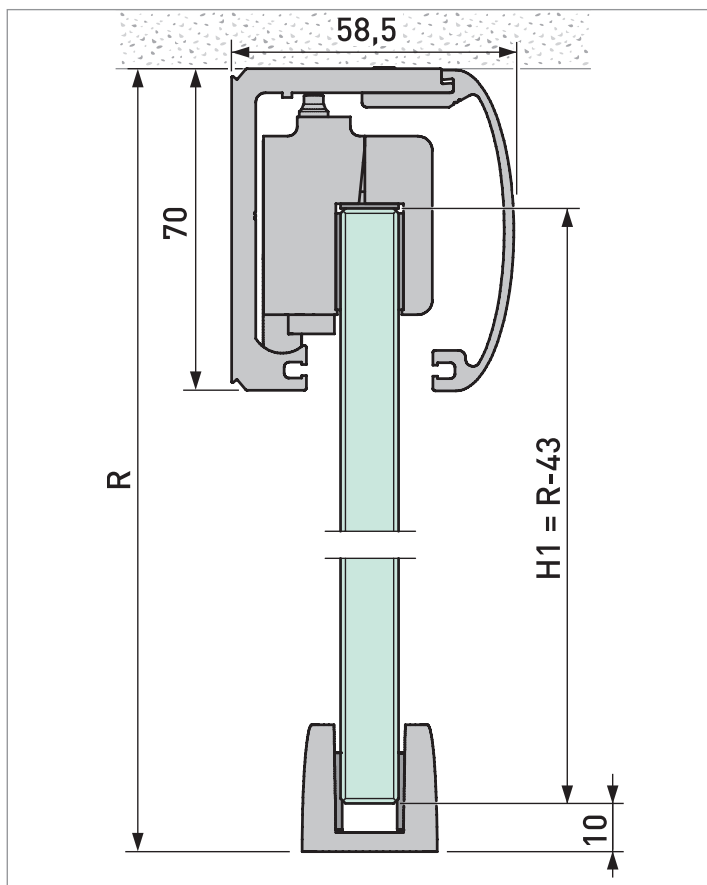
Calculation data for ceiling, wall mounting (without fixed glazing)



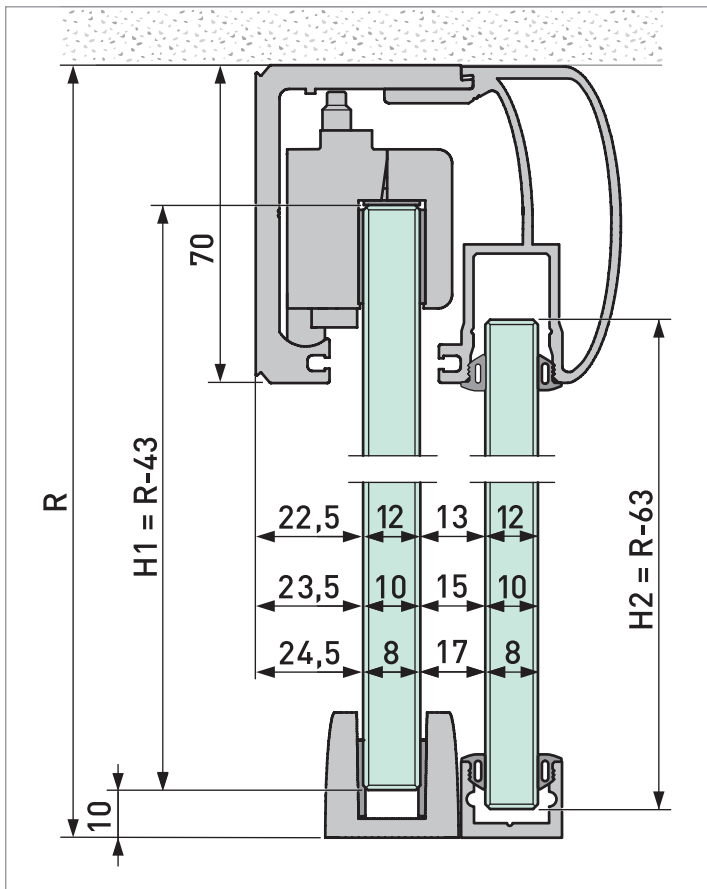
R = ceiling height
LW = clear width
A = width of sliding glass door
H = height of sliding glass door
C = length of running track

Determining the glass height:  
 $H = R - 43$

Determining the glass width:  
 $A = LW + 70$  (single door)  
 $A = LW/2 + 33$  (two doors)



## Calculation data for ceiling mounting (with sidelight)



$R$ = ceiling height
$LW$ = clear width
$A$ = width of sliding glass door
$H1$ = height of sliding glass door
$B$ = width of sidelight
$H2$ = height of sidelight
$C$ = length of running track

### Determining the glass height:

$H1 = R - 43$  (sliding door)

$H2 = R - 63$  (sidelight)

### Determining the glass width:

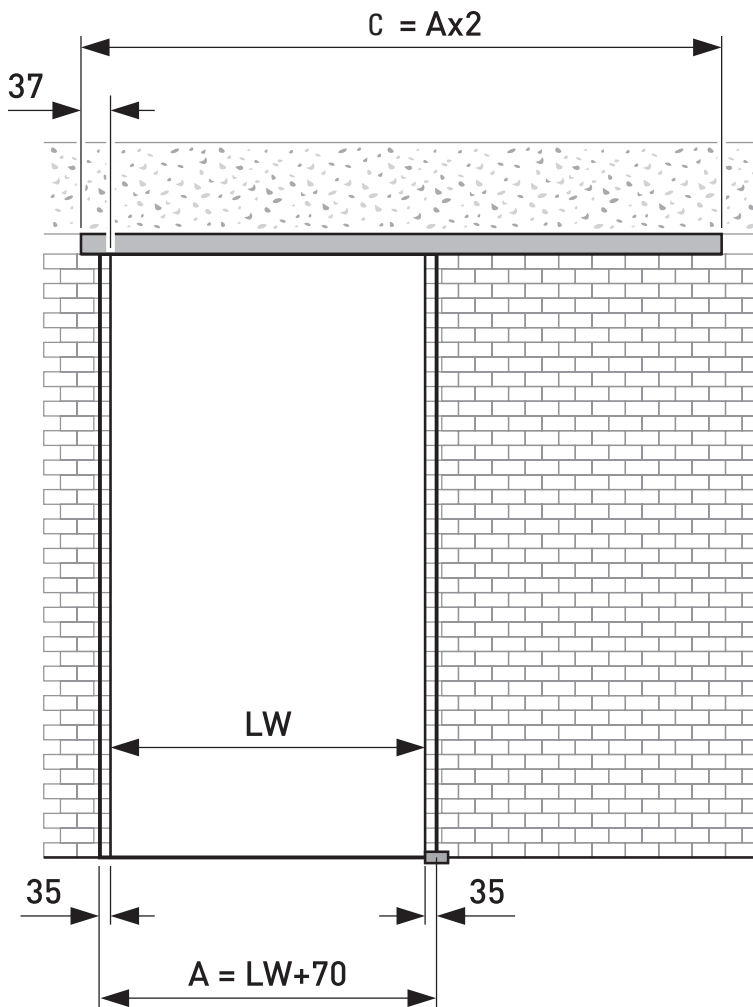
$A = LW + 35$  (single sliding door)

$A = LW/2 + 33$  (two sliding doors)

$B = A + 35$  (fixed glazing, one or two)

# Complete sets for single doors





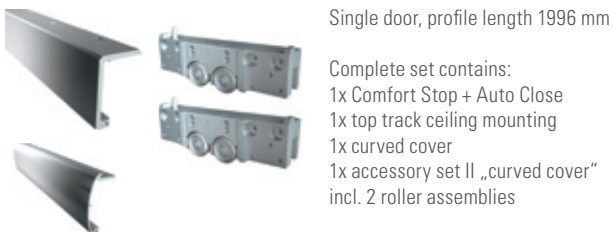
Ceiling and wall mounting, single door, complete sets for profile lengths up to 1996 mm (max. door width 975 mm) or 2996 mm (max. door width 1475 mm)

Important: For sliding doors up to 80 kg, min. door width: 720 mm

Recommended: brush strip (see p. 14)

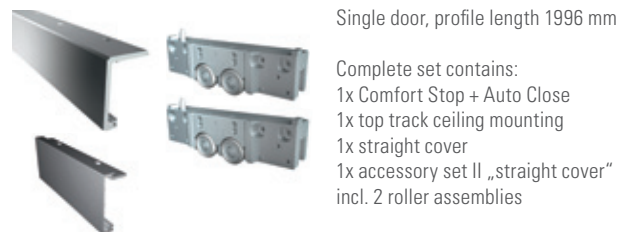
## Complete sets, ceiling mounting, single door

### Complete set 1996 mm, curved cover



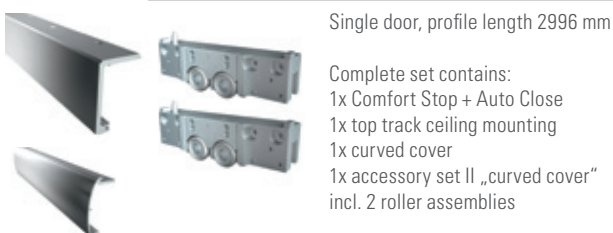
Art. No.	Complete set	Finish
B0 52 144 10	1A	Aluminium
B0 52 144 11	1B	Stainless steel look

### Complete set 1996 mm, straight cover



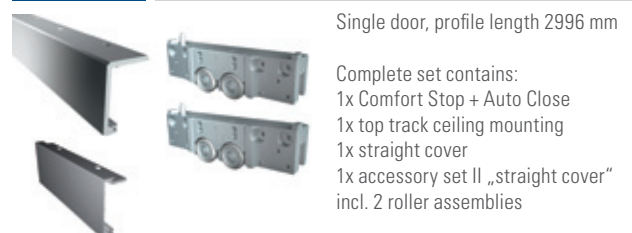
Art. No.	Complete set	Finish
B0 52 144 26	1C	Aluminium
B0 52 144 27	1D	Stainless steel look

### Complete set 2996 mm, curved cover



Art. No.	Complete set	Finish
B0 52 144 12	2A	Aluminium
B0 52 144 13	2B	Stainless steel look

### Complete set 2996 mm, straight cover



Art. No.	Complete set	Finish
B0 52 144 28	2C	Aluminium
B0 52 144 29	2D	Stainless steel look

## Complete sets, wall mounting, single door

### Complete set 1996 mm, curved cover



Single door, profile length 1996 mm

Complete set contains:  
 1x Comfort Stop + Auto Close  
 1x top track wall mounting  
 1x curved cover  
 1x accessory set II „curved cover“  
 incl. 2 roller assemblies

Art. No.	Complete set	Finish
B0 52 144 14	3A	Aluminium
B0 52 144 15	3B	Stainless steel look

### Complete set 1996 mm, straight cover



Single door, profile length 1996 mm

Complete set contains:  
 1x Comfort Stop + Auto Close  
 1x top track wall mounting  
 1x straight cover  
 1x accessory set II „straight cover“  
 incl. 2 roller assemblies

Art. No.	Complete set	Finish
B0 52 144 30	3C	Aluminium
B0 52 144 31	3D	Stainless steel look

### Complete set 2996 mm, curved cover



Single door, profile length 2996 mm

Complete set contains:  
 1x Comfort Stop + Auto Close  
 1x top track wall mounting  
 1x curved cover  
 1x accessory set II „curved cover“  
 incl. 2 roller assemblies

Art. No.	Complete set	Finish
B0 52 144 16	4A	Aluminium
B0 52 144 17	4B	Stainless steel look

### Complete set 2996 mm, straight cover

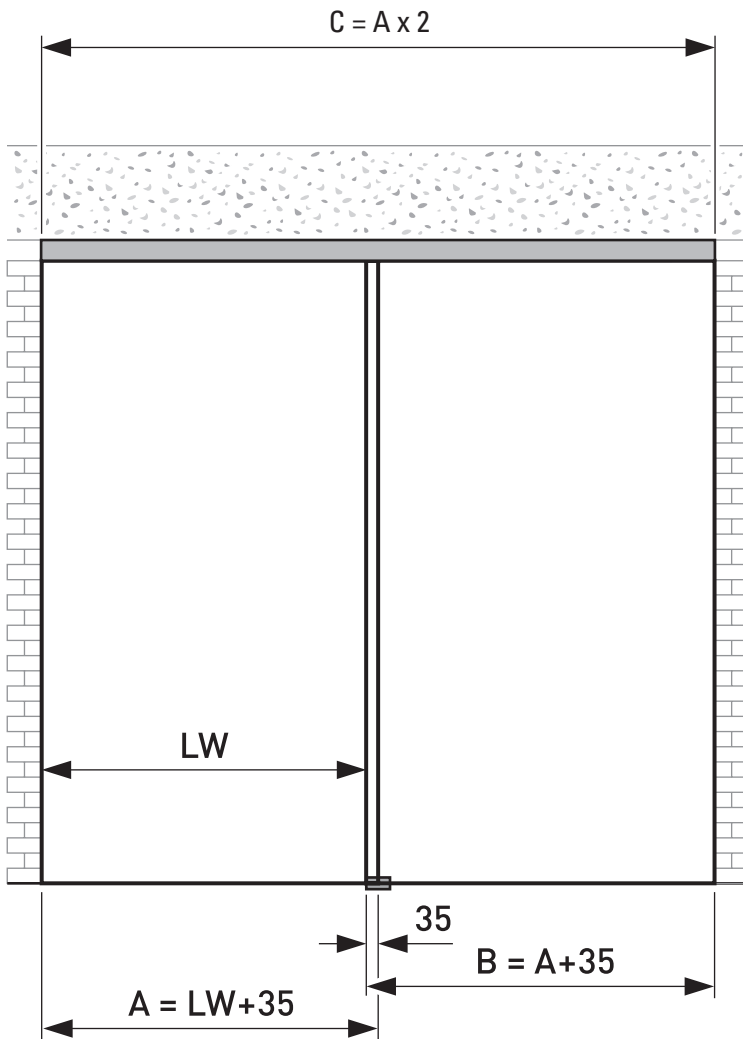


Single door, profile length 2996 mm

Complete set contains:  
 1x Comfort Stop + Auto Close  
 1x top track wall mounting  
 1x straight cover  
 1x accessory set II „straight cover“  
 incl. 2 roller assemblies

Art. No.	Complete set	Finish
B0 52 144 32	4C	Aluminium
B0 52 144 33	4D	Stainless steel look





Ceiling and wall mounting, single door, complete sets for profile lengths up to 1996 mm (max. door width 975 mm) or 2996 mm (max. door width 1475 mm)

Important: Can be used for sliding doors up to 80 kg, min. door width: 720 mm

Recommended: brush strip, silicone tape (see p. 14)

## Complete sets, ceiling mounting with sidelight, single door

### Complete set 1996 mm, curved cover

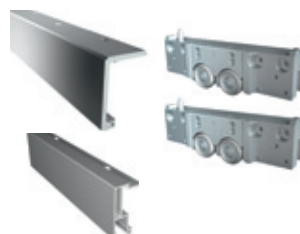


Single door, profile length 1996 mm

Complete set contains:  
 1x Comfort Stop + Auto Close  
 1x top track ceiling mounting  
 1x curved cover for sidelight  
 1x accessory set II „curved cover“  
 incl. 2 roller assemblies

Art. No.	Complete set	Finish
BO 52 144 70	33	Aluminium
BO 52 144 71	34	Stainless steel look

### Complete set 1996 mm, straight cover



Single door, profile length 1996 mm

Complete set contains:  
 1x Comfort Stop + Auto Close  
 1x top track ceiling mounting  
 1x straight cover for sidelight  
 1x accessory set II „straight cover“  
 incl. 2 roller assemblies

Art. No.	Complete set	Finish
BO 52 144 78	41	Aluminium
BO 52 144 79	42	Stainless steel look

### Complete set 2996 mm, curved cover



Single door, profile length 2996 mm

Complete set contains:  
 1x Comfort Stop + Auto Close  
 1x top track ceiling mounting  
 1x curved cover for sidelight  
 1x accessory set II „curved cover“  
 incl. 2 roller assemblies

Art. No.	Complete set	Finish
BO 52 144 72	35	Aluminium
BO 52 144 73	36	Stainless steel look

### Complete set 2996 mm, straight cover



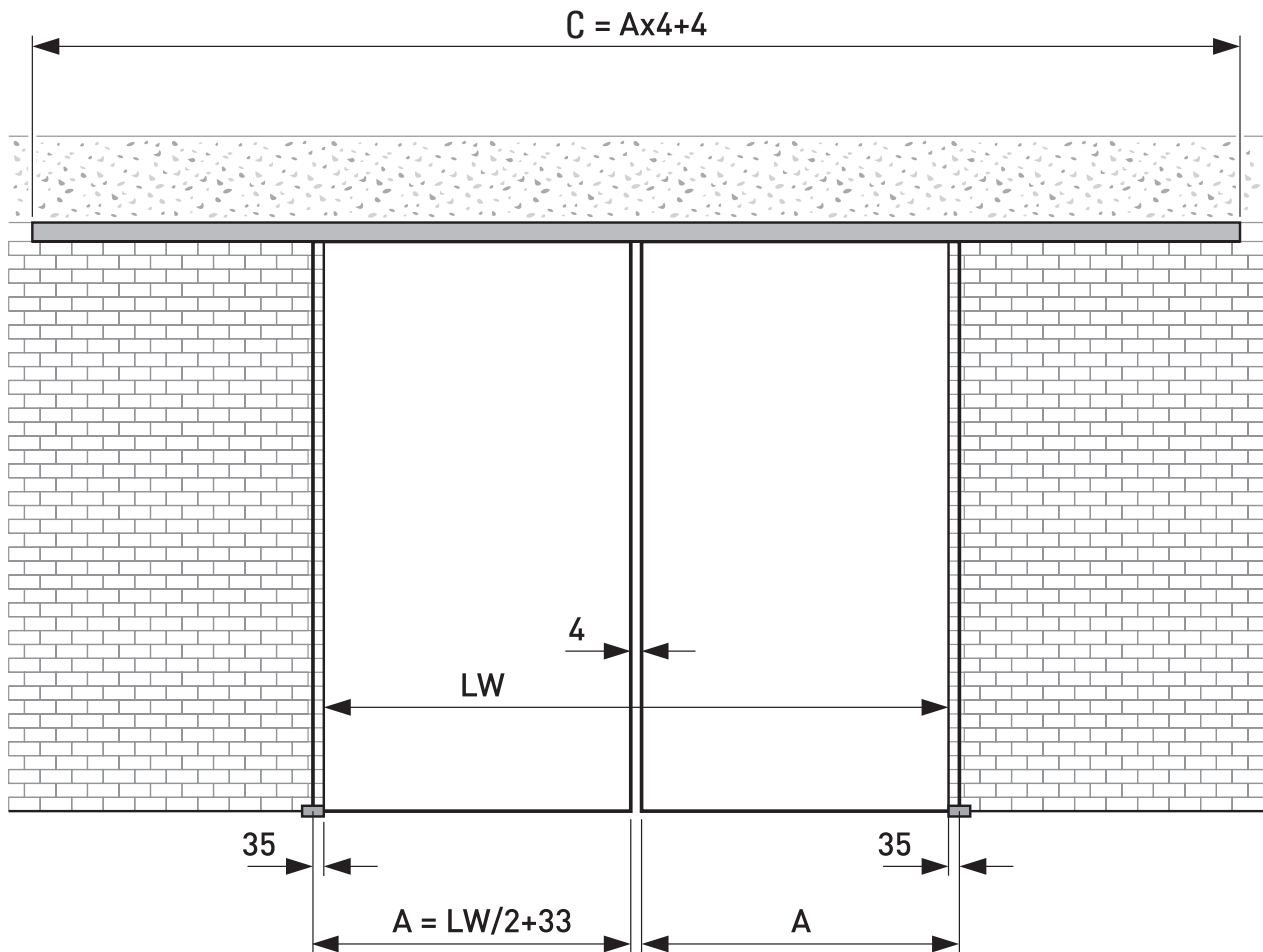
Single door, profile length 2996 mm

Complete set contains:  
 1x Comfort Stop + Auto Close  
 1x top track ceiling mounting  
 1x straight cover for sidelight  
 1x accessory set II „straight cover“  
 incl. 2 roller assemblies

Art. No.	Complete set	Finish
BO 52 144 80	43	Aluminium
BO 52 144 81	44	Stainless steel look

# Complete sets for double doors





Ceiling and wall mounting, double doors, complete sets for profile lengths up to 3996 mm (max. width per door 975 mm) or 5996 mm (max. width per door 1475 mm)

## Complete sets, ceiling mounting, double doors

**Complete set 3996 mm, curved cover**

Double door, profile length 3996 mm

Complete set contains:  
 2x Comfort Stop + Auto Close  
 1x top track ceiling mounting  
 1x curved cover  
 2x accessory set II „curved cover“  
 incl. 4 roller assemblies

Art. No.	Complete set	Finish
BO 52 144 18	5A	Aluminium
BO 52 144 19	5B	Stainless steel look

**Complete set 3996 mm, straight cover**

Double door, profile length 3996 mm

Complete set contains:  
 2x Comfort Stop + Auto Close  
 1x top track ceiling mounting  
 1x straight cover  
 2x accessory set II „straight cover“  
 incl. 4 roller assemblies

Art. No.	Complete set	Finish
BO 52 144 34	5C	Aluminium
BO 52 144 35	5D	Stainless steel look

**Complete set 5996 mm, curved cover**

Double door, profile length 5996 mm

Complete set contains:  
 2x Comfort Stop + Auto Close  
 1x top track ceiling mounting  
 1x curved cover  
 2x accessory set II „curved cover“  
 incl. 4 roller assemblies

Art. No.	Complete set	Finish
BO 52 144 20	6A	Aluminium
BO 52 144 21	6B	Stainless steel look

**Complete set 5996 mm, straight cover**

Double door, profile length 5996 mm

Complete set contains:  
 2x Comfort Stop + Auto Close  
 1x top track ceiling mounting  
 1x straight cover  
 2x accessory set II „straight cover“  
 incl. 4 roller assemblies

Art. No.	Complete set	Finish
BO 52 144 36	6C	Aluminium
BO 52 144 37	6D	Stainless steel look

## Complete sets, wall mounting, double doors

### Complete set 3996 mm, curved cover



Double door, profile length 3996 mm

Complete set contains:  
 2x Comfort Stop + Auto Close  
 1x top track wall mounting  
 1x curved cover  
 2x accessory set II „curved cover“  
 incl. 4 roller assemblies

Art. No.	Complete set	Finish
B0 52 144 22	7A	Aluminium
B0 52 144 23	7B	Stainless steel look

### Complete set 3996 mm, straight cover



Double door, profile length 3996 mm

Complete set contains:  
 2x Comfort Stop + Auto Close  
 1x top track wall mounting  
 1x straight cover  
 2x accessory set II „straight cover“  
 incl. 4 roller assemblies

Art. No.	Complete set	Finish
B0 52 144 38	7C	Aluminium
B0 52 144 39	7D	Stainless steel look

### Complete set 5996 mm, curved cover



Double door, profile length 5996 mm

Complete set contains:  
 2x Comfort Stop + Auto Close  
 1x top track wall mounting  
 1x curved cover  
 2x accessory set II „curved cover“  
 incl. 4 roller assemblies

Art. No.	Complete set	Finish
B0 52 144 24	8A	Aluminium
B0 52 144 25	8B	Stainless steel look

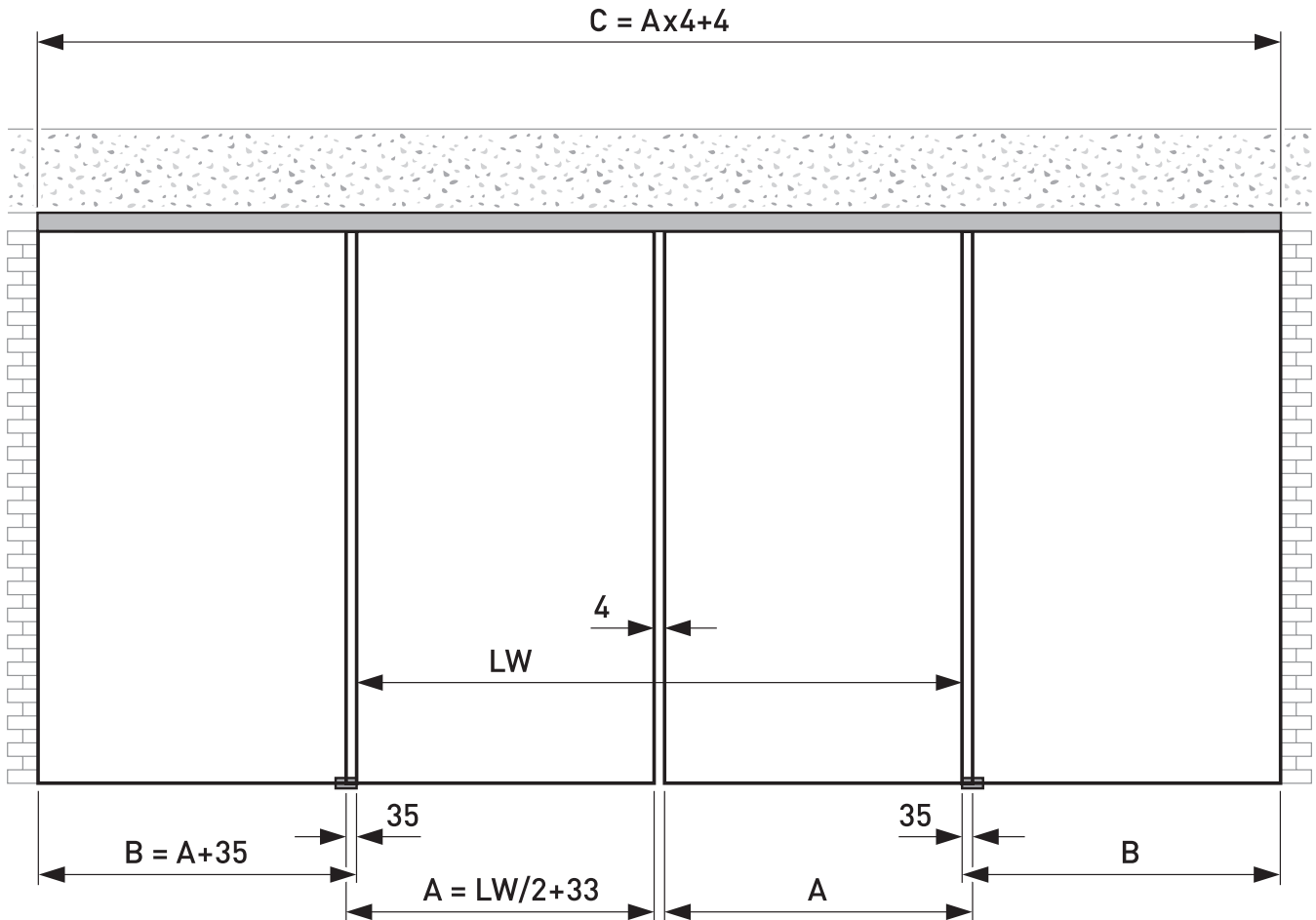
### Complete set 5996 mm, straight cover



Double door, profile length 5996 mm

Complete set contains:  
 2x Comfort Stop + Auto Close  
 1x top track wall mounting  
 1x straight cover  
 2x accessory set II „straight cover“  
 incl. 4 roller assemblies

Art. No.	Complete set	Finish
B0 52 144 40	8C	Aluminium
B0 52 144 41	8D	Stainless steel look



Ceiling and wall mounting, double doors, complete sets for profile lengths up to 3996 mm (max. width per door 975 mm) or 5996 mm (max. width per door 1475 mm)

## Complete sets, ceiling mounting with sidelight, double doors

**Complete set 3996 mm, curved cover**

Double door, profile length 3996 mm

Complete set contains:  
 2x Comfort Stop + Auto Close  
 1x top track ceiling mounting  
 1x curved cover for sidelight  
 2x accessory set II „curved cover“  
 incl. 4 roller assemblies

Art. No.	Complete set	Finish
BO 52 144 74	37	Aluminium
BO 52 144 75	38	Stainless steel look

**Complete set 3996 mm, straight cover**

Double door, profile length 3996 mm

Complete set contains:  
 2x Comfort Stop + Auto Close  
 1x top track ceiling mounting  
 1x straight cover for sidelight  
 2x accessory set II „straight cover“  
 incl. 4 roller assemblies

Art. No.	Complete set	Finish
BO 52 144 82	45	Aluminium
BO 52 144 83	46	Stainless steel look

**Complete set 5996 mm, curved cover**

Double door, profile length 5996 mm

Complete set contains:  
 2x Comfort Stop + Auto Close  
 1x top track ceiling mounting  
 1x curved cover for sidelight  
 2x accessory set II „curved cover“  
 incl. 4 roller assemblies

Art. No.	Complete set	Finish
BO 52 144 76	39	Aluminium
BO 52 144 77	40	Stainless steel look

**Complete set 5996 mm, straight cover**

Double door, profile length 5996 mm

Complete set contains:  
 2x Comfort Stop + Auto Close  
 1x top track ceiling mounting  
 1x straight cover for sidelight  
 2x accessory set II „straight cover“  
 incl. 4 roller assemblies

Art. No.	Complete set	Finish
BO 52 144 84	47	Aluminium
BO 52 144 85	48	Stainless steel look

# Accessories

## Accessory set A



1x upgrade for damping both sides of doors from 1050 mm, suitable for all complete sets

NOTE: Only for use on doors with maximum weight of 80 kg  
Comfort Stop + Auto Close can be used on one side of doors with a minimum width of 720 mm.

Comfort Stop + Auto Close can be used on both sides of doors with a minimum width of 1050 mm.

Comfort Stop + Auto Close is also suitable for retrofitting.

Art. No.

B0 52 144 50

## End cap for curved cover



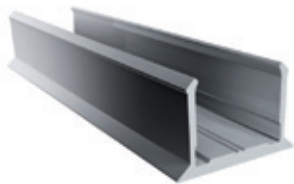
Ceiling mounting, can be used on left or right side

Art. No.

B0 52 144 55

## Cover Profile

Cover profile for single door



Art. No.	Surface	Profile length
B0 52 144 57	Aluminium	1996 mm
B0 52 144 58	Stainless steel look	1996 mm
B0 52 144 59	Aluminium	2996 mm
B0 52 144 60	Stainless steel look	2996 mm

## Curved cover for back side



Ceiling mounting  
To create a curved appearance on the back side of your system

Art. No.	Surface	Profile length
B0 52 144 51	Aluminium	1996 mm
B0 52 144 52	Stainless steel look	1996 mm
B0 52 144 53	Aluminium	2996 mm
B0 52 144 54	Stainless steel look	2996 mm

## Brush strip

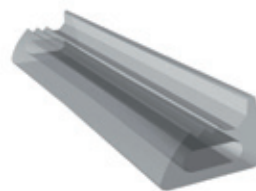


For covers and top tracks  
Sales unit = 20 m

Art. No. Length

B0 52 144 56 1 m

## Silicone tape



Silicone tape for single door  
Sales unit = 50 m

Art. No.	Surface	Profile length
B0 52 144 61	transparent 8 mm	1m
B0 52 144 62	black 8 mm	1m
B0 52 144 63	transparent 10 mm	1m
B0 52 144 64	black 10 mm	1m
B0 52 144 65	transparent 12 mm	1m
B0 52 144 66	black 12 mm	1m

### End cap for floor-wall profile

Can be used on left or right side



Art. No.

BO 52 144 67

### End cap for ceiling profile

Can be used on left or right side



Art. No.

BO 52 144 68

### Floor-wall profile (U-Profile)

Fixed glazing, profile height 16 mm



Art. No.	Surface	Profile length
BO 52 144 42	Aluminium	1996 mm
BO 52 144 43	Stainless steel look	1996 mm
BO 52 144 44	Aluminium	2996 mm
BO 52 144 45	Stainless steel look	2996 mm
BO 52 144 46	Aluminium	3996 mm
BO 52 144 47	Stainless steel look	3996 mm
BO 52 144 48	Aluminium	5996 mm
BO 52 144 49	Stainless steel look	5996 mm

### Ceiling profile (U-Profile)

Fixed glazing, profile height 35 mm;  
 Calculation of height of glass panes for the ceiling profile (H3)  
 Your project measures  
 Ceiling height (top edge of profile) = R = \_\_\_\_\_  
 Calculation of height of glass panes for fixed glazing for ceiling profile (mm) = H3 = R - 27 mm = \_\_\_\_\_



Art. No.	Surface	Profile length
BO 52 144 86	Aluminium	1996 mm
BO 52 144 87	Stainless steel look	1996 mm
BO 52 144 88	Aluminium	2996 mm
BO 52 144 89	Stainless steel look	2996 mm
BO 52 144 90	Aluminium	3996 mm
BO 52 144 91	Stainless steel look	3996 mm
BO 52 144 92	Aluminium	5996 mm
BO 52 144 93	Stainless steel look	5996 mm

Other versions available on request !

## Germany

Bohle AG  
Dieselstraße 10  
D - 42781 Haan

T +49 2129 5568-0  
F +49 2129 5568-201

[info@bohle.de](mailto:info@bohle.de)

## South Africa

Bohle Glass Equipment (Pty) Ltd.  
Unit 3, Graphite Industrial Park  
Fabriek Street,  
Strijdom Park 2125, Gauteng

T +27 11 792-6432  
F +27 11 793-5634

[info@bohle.co.za](mailto:info@bohle.co.za)

## USA

Bohle America, Inc.  
10924 Granite Street  
Suite 200  
Charlotte, NC 28273

T +1 704 247 8400  
F +1 704 247 8420

[info@bohle-america.com](mailto:info@bohle-america.com)

## United Kingdom and Ireland

Bohle Ltd.  
Fifth Avenue  
Tameside Park · Dukinfield  
Cheshire · SK16 4PP

T +44 161 3421100  
F +44 161 3440111

[info@bohle.ltd.uk](mailto:info@bohle.ltd.uk)